



A COMMUNITY INVESTMENT
IN STUDENT SUCCESS





“Throughout my high school career, I knew college was the right decision. However, my parents knew very little about the college application process and education system. Achieving Colligate Excellence and Success (ACES) provided all the necessary support and guidance to help me continue my educational pathway. ACES has always shown relentless support at both an educational and emotional level.”

- Jorge Torres, ACES Student

Higher Education Is Out of Reach for Many Students in Montgomery County

There remain significant barriers to entry into higher education and the workforce, especially for students from historically underrepresented backgrounds. Issues of access, affordability, and belonging put college out of reach for many students.

21%

Of high school students nationally do not have access to a school counselor, many of whom are low income¹

33%

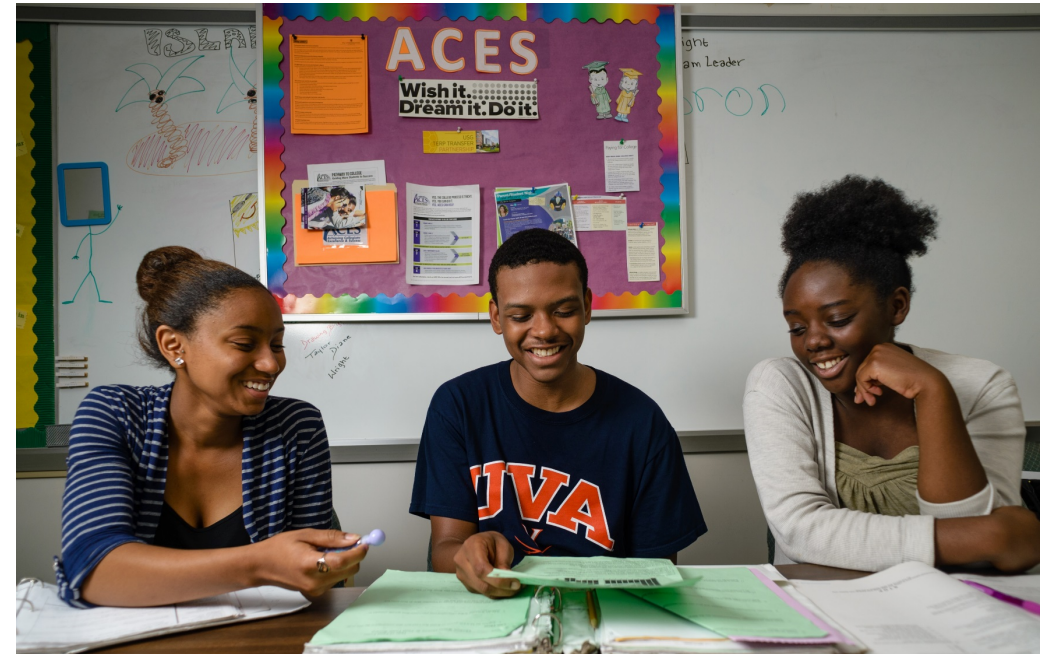
Of students enrolled in higher education in the U.S. leave after their first year, citing lack of support²

10%

Of people from low-income families have a bachelor's degree by age 25, compared to 50% of high-income families³

75%

Of new jobs in DC require education beyond a high school diploma⁴



If Not Addressed, the Gap in College Attainment and Graduation Will Continue to Grow



Although Montgomery County Public Schools boasts one of the best graduation rates in the nation—with 90% of students earning a high school diploma—college achievement rates vary widely.

- In higher income districts of the county, more than 8 in 10 adults 25 years and older have a postsecondary degree.
- In lower income districts of the county, 5 in 10 adults 25 years and older have postsecondary degrees.⁵

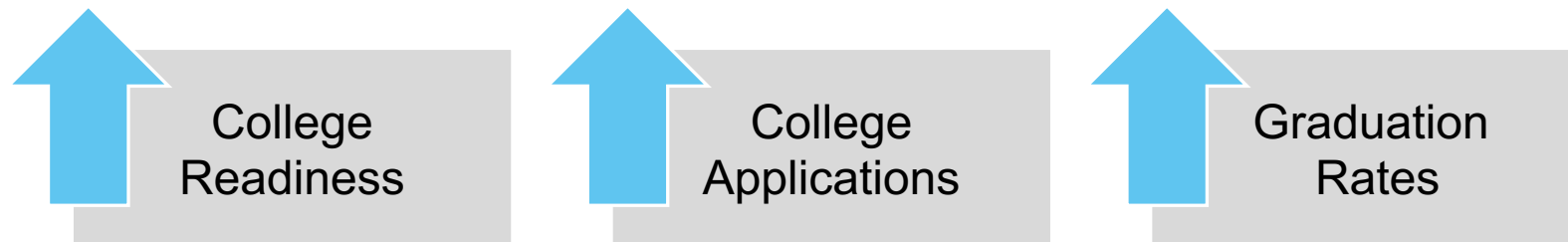
This data suggests that gaps in graduation rates, college access, and degree attainment exist and ACES works to address these gaps.

ACES Provides a Realistic Pathway for Students to Get to and Through College

Since its launch in 2013, ACES has been building equitable opportunities for students in Montgomery County to earn their bachelor's degree and enter into a career.

A unique partnership between 14 high schools in Montgomery County Public Schools, Montgomery College, and the Universities at Shady Grove, ACES provides access to individualized coaching, scholarship opportunities, and career readiness.

The results are a sharp increase in;



Equipping students to join the region's workforce and contribute back to the local economy.



A Catalyst to Personal, Academic, and Professional Success

Sara didn't consider attending college until ACES showed her it was possible.

Through individualized coaching and college application guidance, she received a full ride scholarship, and is the first in her family to attend college. Sara graduated from the University of Maryland's Robert H. Smith School of Business in the fall and start working fulltime at the global accounting firm, Grant Thornton.

“ACES helped me develop a personality that I never knew I had. It has made me the woman I am today and I am so thankful for all of the opportunities to grow.” – Sara Ruiz, ACES Graduate

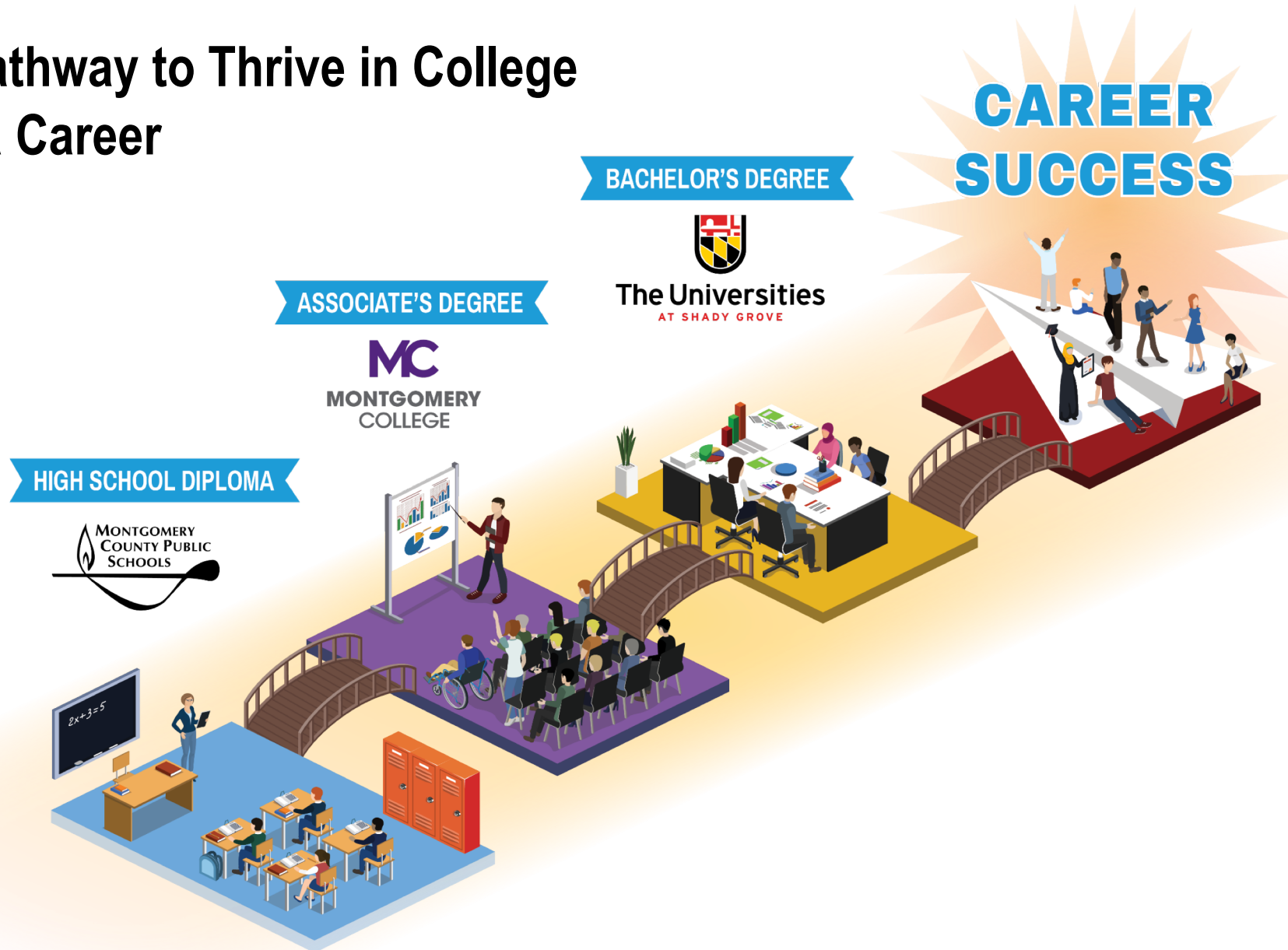
Our Coaches Work with Students, Every Step of the Way

Our coaches work with students every step of the way, beginning in the 11th grade, continuing to community college, and through the completion of a bachelor's degree.

This pathway provides seamless transitions from each institution, ultimately creating a better equipped and more highly skilled workforce.



A Supportive Pathway to Thrive in College and Enter into a Career



ACES Sees Promise in Our Students and Believes in Their Potential

ACES students are often the first in their family to pursue college.

They may be first-generation Americans, immigrants, from a low-income family, or have differing abilities that have limited their opportunity to pursue a bachelor's degree.

Our students represent a wide range of backgrounds and experiences, including;

80%

are first in their families to graduate from college

50%

are from low-income households

23%

are from single parent households

12%

are English language learners, immigrants, or first-generation Americans

6%

are students with differing abilities

1%

have been, or are presently in, the foster care system

Our Impact Is Felt Throughout the Entire Community



2,500+

Students supported with critical education and coaching services each year



99%

Nearly all ACES students receive their high school diploma and enter into higher education



2X

ACES students are twice as likely to receive financial aid than their peers

ACES impact is felt far beyond the number of students served. ACES serves as a lifeline for parents, a point of inspiration for siblings, a challenge for peers, and a powerful tool for fostering future leaders.



INVESTING IN OUR STUDENTS

Invest in the Promise of Our Students and Our Region

Together, *[INSERT FUNDER NAME HERE]* and ACES can support an even greater number of Montgomery County students and their families in their pursuit of higher education.

An investment in ACES is an investment in all of Montgomery County's public education institutions. Your investment—no matter the size—benefits the entire county, now and into the future.



“I like to think of ACES as a family, I have made great friends and mentors through the ACES program and I am so thankful.” - Jathselle Pierre-Louis, ACES Graduate

Partnership Idea #1: Fuel the Future of Our Region's Workforce

A critical aspect of ACES is preparing students to excel in the workforce by providing hands-on opportunities to learn and grow.

Consider partnering with ACES to provide:

- Internships or full-time jobs
- Networking opportunities
- Career readiness curriculum
- Immersive workforce development experiences
- Funding to offset internships or career readiness costs



Partnership Idea #2: Innovative Scholarships for Students

For ACES students, funding a scholarship is not just about covering the basic costs of education, it is providing a realistic and achievable pathway for students to envision themselves obtain a bachelor's degree.

Student with Full Federal PELL Grant

- MC cost = \$5,000, USG cost = \$17,400
- Total cost to obtain bachelor's degree = \$22,400

Student with Partial Federal PELL Grant

- MC cost = \$9,500, USG cost = \$23,400
- Total cost to obtain bachelor's degree = \$32,900

One Dream Act Student

- MC cost = \$15,000, USG cost = \$29,400
- Total cost to obtain bachelor's degree = \$44,400

** Total cost includes tuition and fees, textbooks, developmental courses assuming 60 credits at MC and junior and senior year at USG.*

Partnership Idea #3: Invest in Our Transformational Model

As a first-of-its-kind collective impact model, ACES works with three public education institutions to transform the higher education experience for students who need it the most.

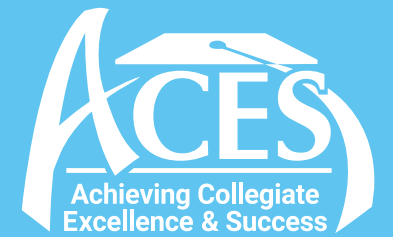


Consider investing in our partnership through:

- Offsetting the cost of coach and staff member salaries
- Funding research and impact collection
- Providing high school to college and college to career transition supports



THANK YOU



Your Partners for Success



Richee L. Smith Andrews
Chief Advancement Officer
Rsmith25@umd.edu
301-738-6113

The Universities at Shady Grove
9636 Gudelsky Drive
Rockville, MD 20850
shadygrove.umd.edu



David M. Sears
Sr. Vice President for Advancement
and Community Engagement
David.sears@montgomerycollege.edu
240-567-7492

Montgomery College
9221 Corporate Boulevard
Rockville, MD 20850
montgomerycollege.edu



Elaine Chang-Baxter
Director of Partnerships
Carver Educational Services Center
Elaine_L_Chang-Baxter@mcpsmd.org
301-217-5370

Montgomery County Public Schools
850 Hungerford Drive
Rockville, MD 20850
montgomeryschoolsmd.org



1. "Equality Isn't Equity: Every Student Needs A Great School Counselor." *The Education Trust*. January 2018. Retrieved <https://www.edtrust.org/resource/equality-isnt-equity-every-student-needs-great-school-counselor/>
2. Ron Haskins, Harry Holzer, Robert Lerman. "Promoting Economic Mobility by Increasing Postsecondary Education." *Pew Charitable Trusts*. May 2009. Economic Mobility Project, pp. 43-44.
3. Martha J. Bailey, Susan M. Dynarski. "Inequality in Postsecondary Attainment." *Russell Sage Foundation*. 2011. *Whither Opportunity: Rising Inequality, Schools, and Children's Life Chances*, pp. 117-132.
4. Heather Boushey, Shawn Fremstad, Rachel Gragg, and Margy Waller. "Understanding Low-wage Work in the United States." *Center for Economic Policy and Research*. 2007.
5. "Educational Attainment in Montgomery County, Maryland". *Statistical Atlas, U.S. Census Bureau*. April 2015.